



# PORTFOLIO

**MARINA L'HOIR**  
Painter and Creative Lead

**MMHC**

✧ INTUITIVE GEOMETRY

**2024  
2025**

# ABOUT ME

MMHC (Marina L'Hoir) is a French abstract painter whose visual language bridges the precision of design and the spontaneity of gesture. She trained in applied arts and jewellery design at Paris's prestigious École Boulle, where she sharpened an instinct for proportion, material tactility, and meticulous craft. A decade as a graphic designer and art director followed, immersing her in digital composition, colour systems, and the disciplined use of negative space.

In 2023 she relocated to Abu Dhabi and shifted her primary focus from client briefs to canvas. The move brought desert light and wide horizons into her palette while leaving her design reflexes intact: crisp lines, calibrated contrasts, and a search for visual equilibrium. MMHC's work has since been shown in Rencontre(s) at the Alliance Française and Lumière de Femmes at Sorbonne University Abu Dhabi, garnering attention for its union of European rigour with Gulf luminosity.



## EXHIBITIONS

### **Lumieres de Femmes**

2025 - Sorbonne University  
Abu Dhabi

### **Rencontres(s)**

2024 - Alliance Française  
Abu Dhabi

## STATEMENT

MMHC's practice revolves around Intuitive Geometry—the act of “painting energy through form and balance.” Each work begins as a quiet dialogue between sensation and surface: she follows instinctive colour cues, lets pigment drift or collide, then anchors the flux with measured lines that resemble star maps or urban grids. This tension between chance and control creates a field where movement never fully settles, yet harmony prevails.

For MMHC, the finished canvas becomes a totem—a charged object meant to hold and reflect the viewer's own internal rhythm. Layers of acrylic, ink, and occasional graphite or metal catch changing light, ensuring the piece stays alive to its surroundings. By marrying fluid grounds with architectural clarity, she seeks a visual equivalent of breath: expansion and contraction held in a single, radiant pause. In the quiet space earned between shapes and hues, viewers are invited to stand still, attune, and absorb an echo of the equilibrium the artist pursues.





# WORK

## FORM STUDIES I – III

2025 – Acrylic on paper · 15 × 15 cm each

Series of three uniques

In this palm-sized trio MMHC distils her intuitive geometry into concentrated shape experiments. Each canvas tests how arcs, bars and planes can lock together, using a reduced palette to highlight pure relationships of form and counter-form.

- Form Study I – A looping blue corridor meets a small ivory sun; mustard and turquoise inserts keep the eye moving around the square.
- Form Study II – A cobalt crescent slips behind a cool grey grid, its calm interrupted by a burgundy sliver that resets the balance.
- Form Study III – A pale disc rises against midnight blue while two yellow beams cut forward, turning the square into a pocket horizon.

Whether shown as a tight triptych or dispersed, these miniatures act as crisp visual notes—self-contained explorations of proportion, rhythm and the quiet tension that sits at the heart of MMHC's larger works.

I



II



III



## MONDREAM

2025 – Acrylic on canvas · 52 × 52 cm

A compact yet assertive example of MMHC's Intuitive Geometry, this square canvas distils her signature dialogue between instinct and structure into a vivid primary-colour rhythm. Cobalt blue arcs and stripes cut across saturated fields of cadmium yellow and alizarin crimson, while areas of untouched white create measured pauses—allowing the eye to breathe before re-entering the chromatic pulse. The surface shifts between flat, graphic clarity and softly modulated textures, echoing MMHC's dual training in graphic design and traditional craft.

The composition suggests both architectural plans and celestial maps: three diagonal white bands accelerate the gaze upward, a half-circle anchors the centre like a rising sun, and interlocking rectangles frame the movement in quiet counterpoint. Serving as a visual “totem,” the piece captures energy in balanced tension, making it equally at home in an intimate collector's wall or a curatorial context focused on contemporary abstract dialogues between control and spontaneity.

# PARADOX

2025 - Acrylic, texture medium & sand on canvas · 100 × 76 cm · Unique piece

Shown in Rencontre(s) — Alliance Française Abu Dhabi, Nov 2024

A bold study in contradiction, Paradox #5 pits raw mineral blacks and marbled neutrals against two electric-blue boomerang forms that seem to hover in mid-air. Jagged fields of matte ivory and sanded beige slice into the picture plane, while three cobalt bars in the upper right echo the rhythmic “beats” MMHC often uses to hold tension. The eye toggles between gravity (the dense, earth-toned centre) and lift (the crisp ultramarine arcs), capturing the series’ core question: how can opposing forces share the same space?

The work’s textured passages—built up with sculptural paste and crushed stone—contrast sharply with the smooth, graphic planes, underscoring MMHC’s dialogue between chance and control. First shown at the Alliance Française, it anchored the exhibition’s conversation on contemporary abstraction, standing as a totem of balanced friction: order meets upheaval, stillness meets kinetic charge.





# NEBULA

2024 - Ink, Acrylic, texture medium & sand on canvas · 155 × 100 cm · Unique piece

A drifting cloud of viridian, ultramarine and magenta sweeps the surface like cosmic gas unfolding in deep space. Slender incised lines hover within the haze, tracing invisible orbits and guiding the eye through weightless horizons. MMHC began with an instinctive wet-on-wet ground, refined the emerging shapes digitally, then returned to the canvas to anchor vivid chaos into crystalline harmony. The result is a suspended moment of expansion—an invitation to lose orientation and simply drift among the stars.



# RISE & SHINE

**2025** - Acrylic, ink, graphite & selective 24 k gold leaf on canvas · Triptych, 3 × (40 × 126 cm)

Commissioned for “Lumière de Femmes”, Sorbonne University Abu Dhabi (March 2025)

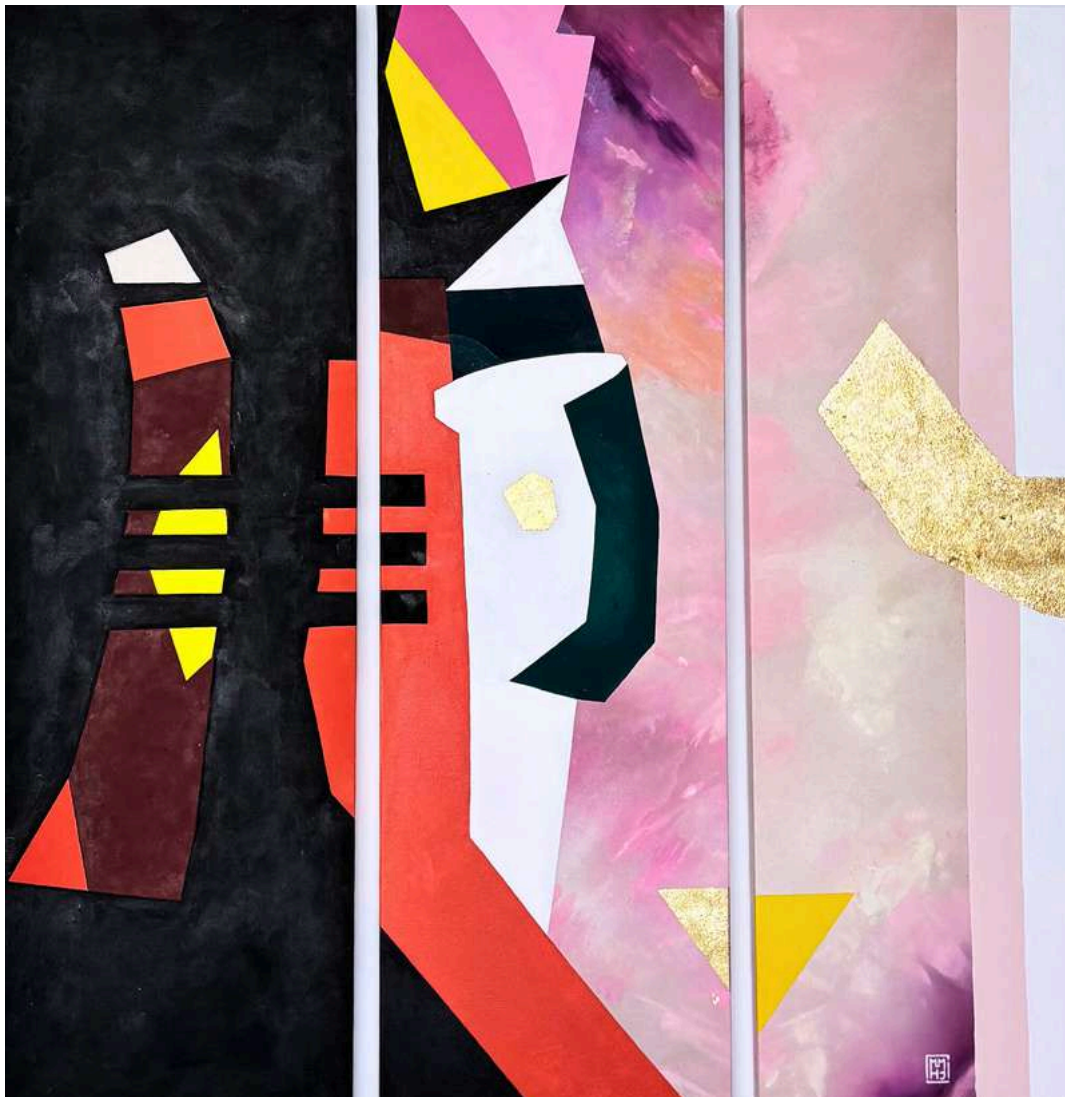
Rise & Shine is a three-panel exploration of feminine light and emergence.

Panel I, Dawning Courage, opens in muted greys with the first flickers of ochre;

Panel II, Luminous Threshold, pulses with turquoise and rose as forms collide;

Panel III, Radiant Bloom, bursts into golden affirmation, the only moment gilded with 24 k leaf.

Across 300 × 120 cm, MMHC maps a journey from quiet uncertainty to full self-illumination, echoing the exhibition's theme of women finding and sharing their inner light.



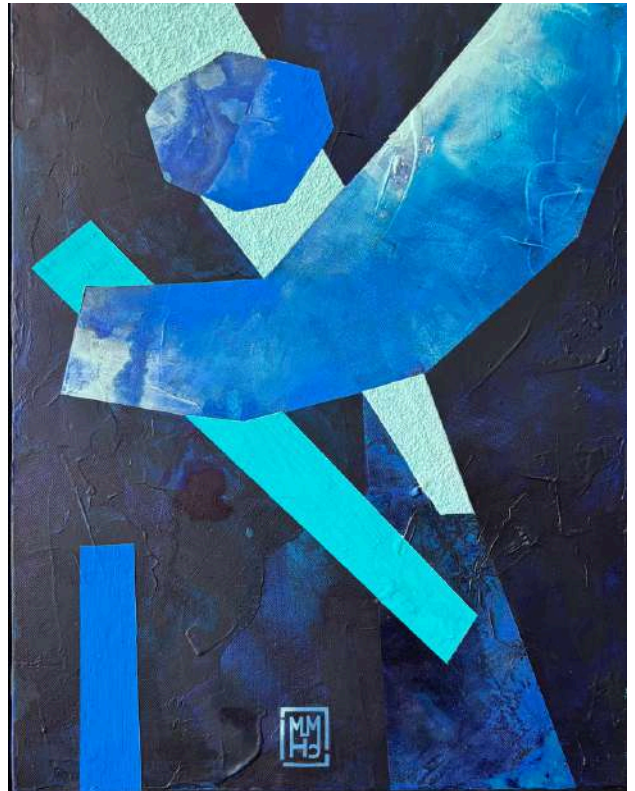


# BLUE LIGHT

2025 - Acrylic, ink, sand on canva · 36 × 46 cm

Blue Light immerses the viewer in a nocturnal radiance where deep indigo and cerulean converge. A broad, curved band of sky-blue floats above a shadowy ultramarine field, while slender turquoise and mint bars slice through the composition like shafts of refracted luminescence. Textured impasto meets smooth glazes, giving the surface a living quality—each patch of blue oscillates between density and transparency.

This piece continues MMHC's investigation of Intuitive Geometry, turning simple forms into vessels of energy. Here, arcs and lines guide the eye toward a point of quiet brilliance—as if capturing a single azure flash in the darkness. Compact yet commanding, Blue Light functions as a totem of blue energy, ready to activate any curator's wall or private collection.



# SOLARIS

2025 - Acrylic, ink, sand on canva · 36 × 46 cm

Solar Light bathes its viewer in the warm spectrum of a waking sun. Sweeping washes of vermilion and amber collide with emerald and sapphire undertones, while a bold white chevron cuts across the composition like a burst of refracted glare. Soft, swirling glazes meet crisp, textured impasto, giving the surface a dual life—both ephemeral and tangible.

Continuing MMHC's Intuitive Geometry, the work uses simple shapes—arcs, polygons and bars—as conduits for energy. Here, the white form anchors the heat of the colours, creating a visual “totem” that radiates balance and motion. Together with Blue Light, Solaris completes a two-piece meditation on how light itself can be both substance and spirit in contemporary abstraction.

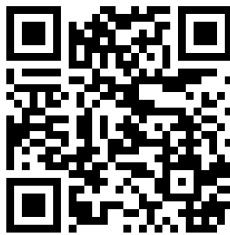
# CONTACT

**MMHC**

**MARINA L'HOIR**

Painter and Creative Lead

[Marina@mmhc-studio.com](mailto:Marina@mmhc-studio.com)



@mmhc.studio  
Follow-me